

HAUTEUR

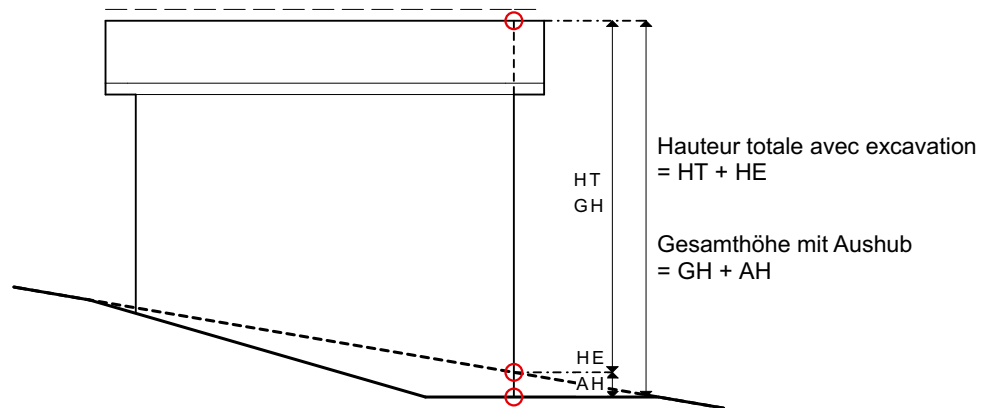
Höhenbegriffe, Höhenmasse

en français: Art. 11-15 LC + 8 -11 OC

auf deutsch: Art. 11-15 BauG + 8 -11 BauV

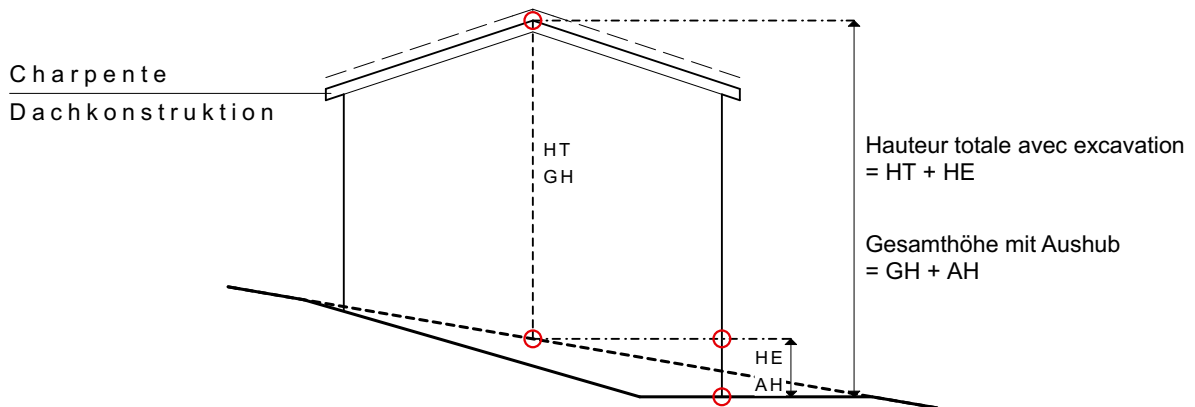
Art. 11-12 LC

Art. 11-12 BauG



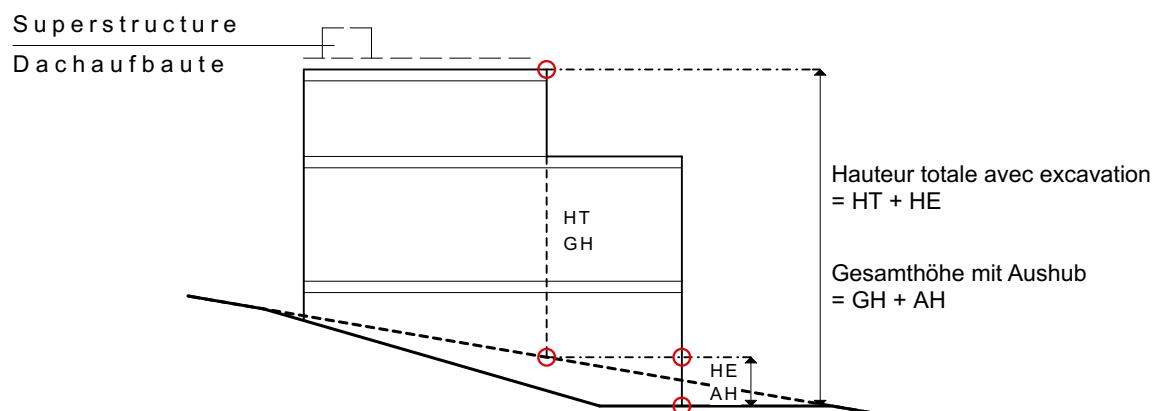
TOIT EN PENTE Art. 9 OC

Satteldach Art. 9 BauV

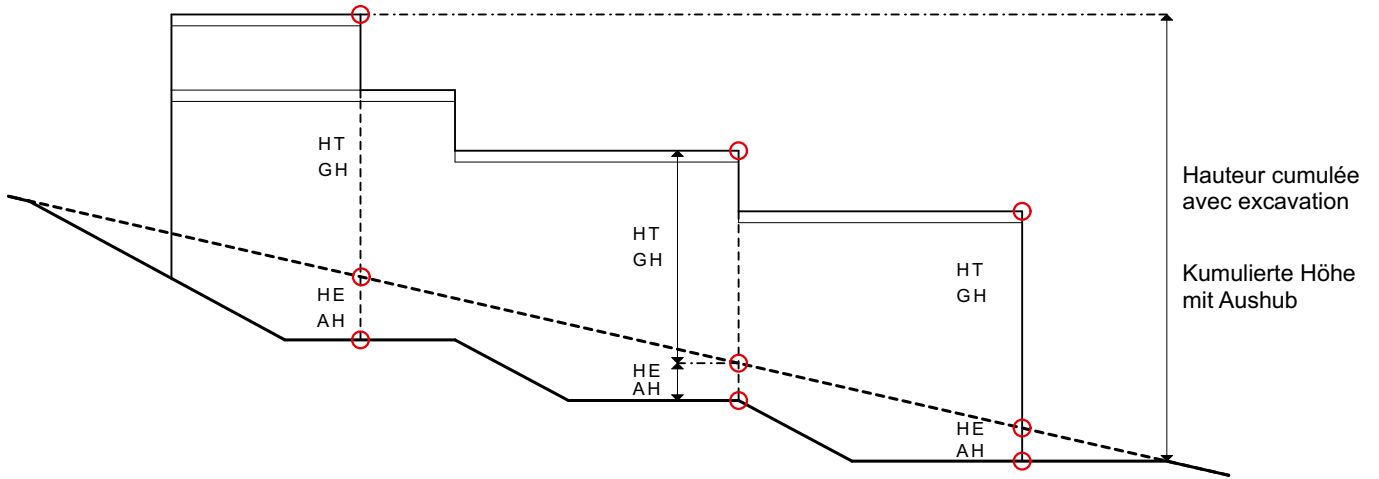


TOIT PLAT Art. 9 OC

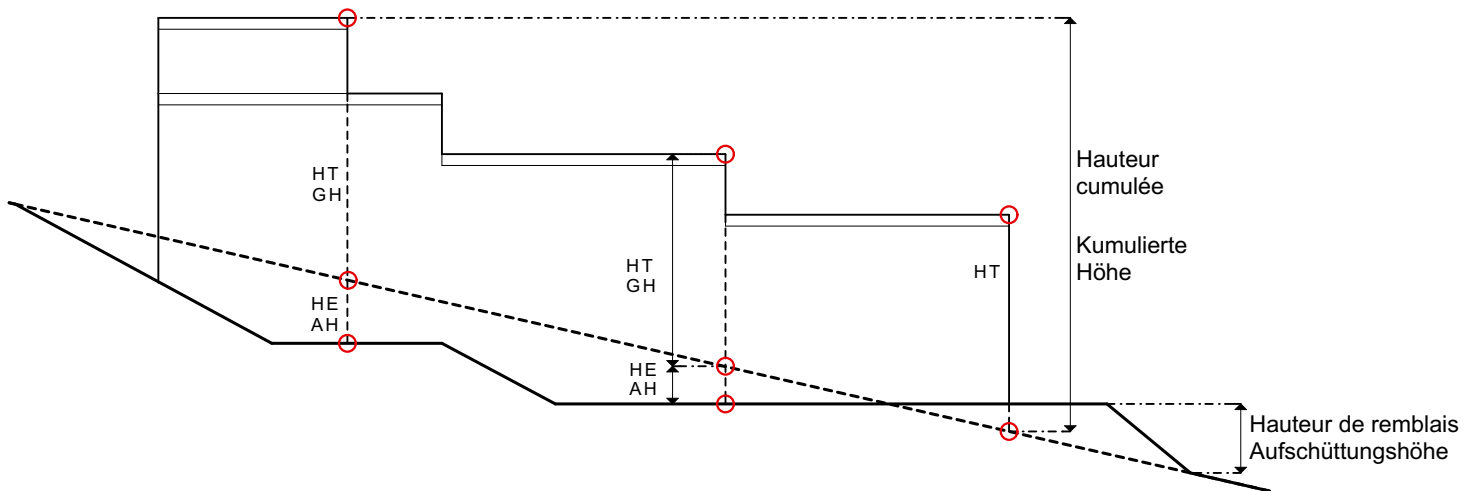
Flachdach Art. 9 BauV



CORPS DE BÂTIMENT ECHELONNES Art. 11 al. 3 et 14 LC
Gestaffelte Baukörper Art. 11 Abs. 3 und 14 BauG

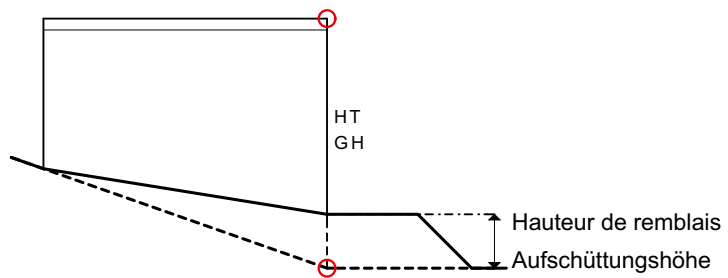


CORPS DE BÂTIMENT ECHELONNES Art. 10 OC
Gestaffelte Baukörper Art. 10 BauV



TERRAIN AMÉNAGÉ PLUS HAUT Art. 11 et 27 LC

Höherer gestalteter Boden Art. 11 und 27 BauG



LEGENDE

HT = Hauteur totale
HE = Hauteur d'excavation

Terrain de référence
Terrain aménagé

GH = Gesamthöhe
AH = Aushubhöhe

Massgebendes Terrain
Gestaltetes Terrain